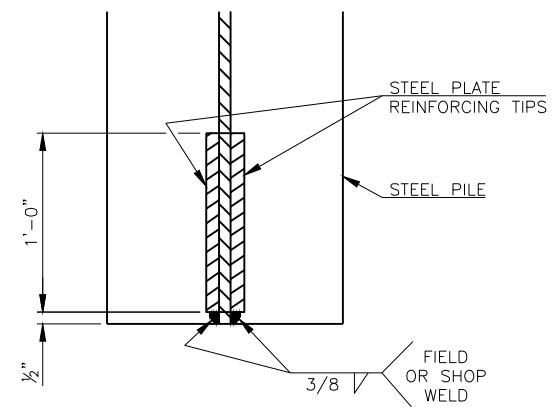
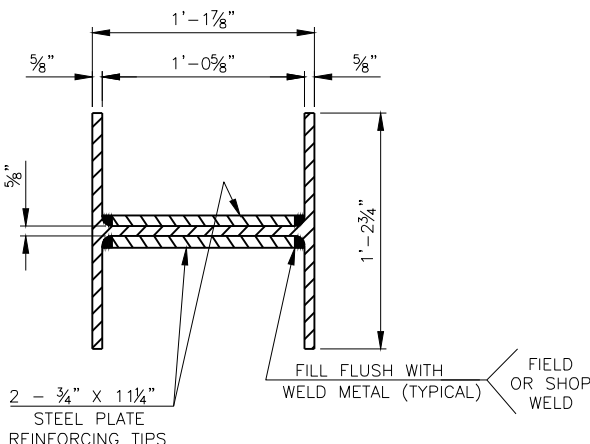


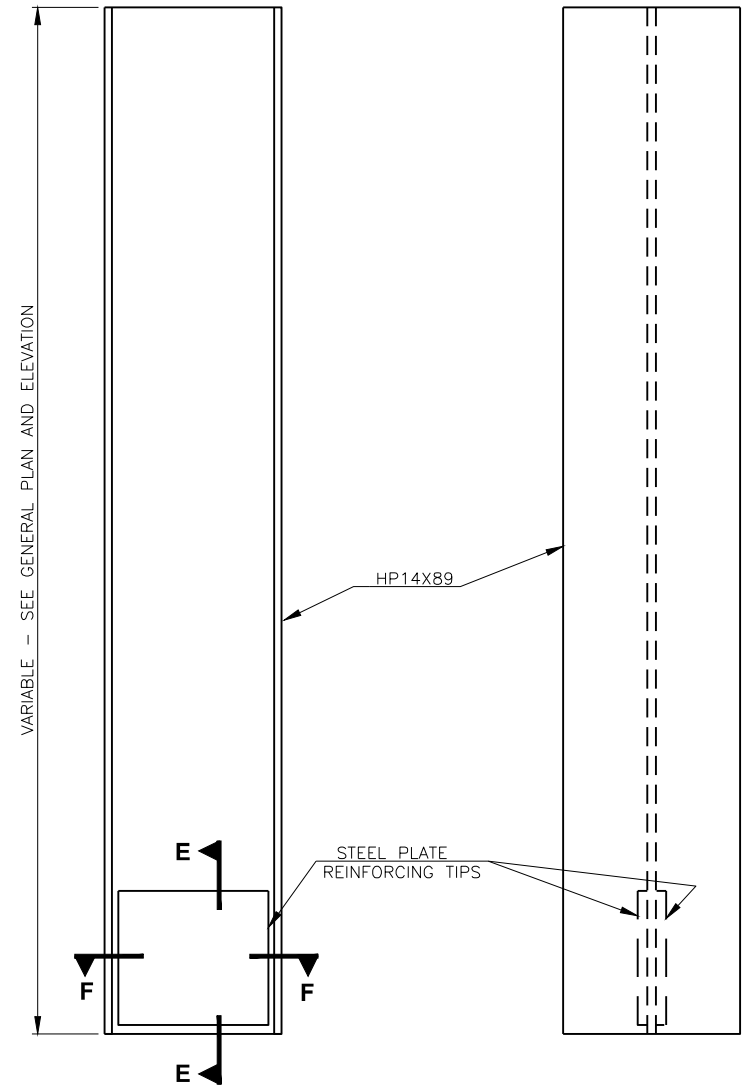
DESCRIPTION	REVISIONS	DATE



SECTION E-E



SECTION F-F

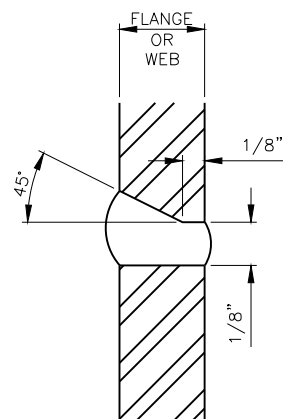


ELEVATION OF WEB

ELEVATION OF FLANGE

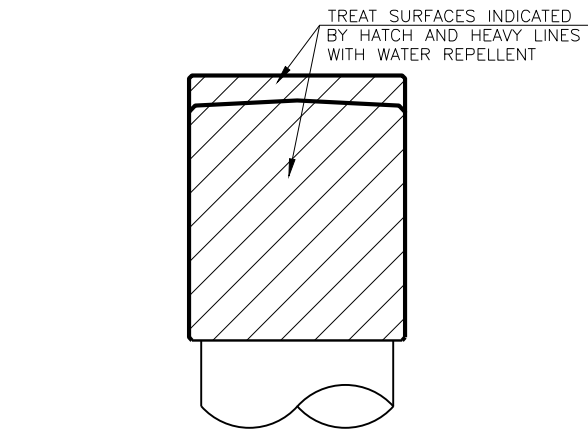
DETAIL OF PILING

NOTE: PROVIDE STRUCTURAL STEEL FOR PILING AND STEEL PLATE REINFORCING TIPS IN ACCORDANCE WITH AASHTO M270 (ASTM A572), GRADE 50. THE CONTRACTOR MAY USE MANUFACTURED DRIVING TIPS AS AN ALTERNATIVE TO THE STEEL PLATE REINFORCING TIPS SHOWN WITH APPROVAL BY THE BRIDGE ENGINEER. THE DEPARTMENT CONSIDERS THE COST OF STEEL PLATE REINFORCING TIPS OR MANUFACTURED DRIVING TIPS TO BE INCLUDED IN THE CONTRACT UNIT PRICE OF PILES, FURNISHED.

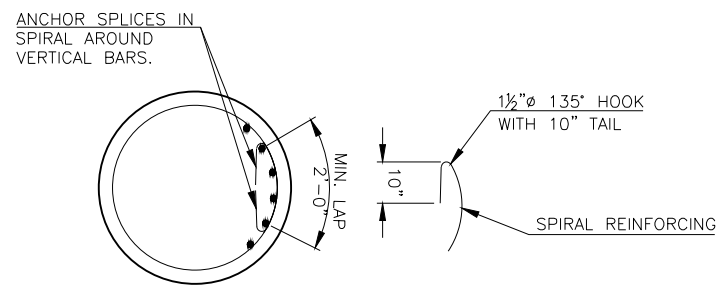


DETAIL A

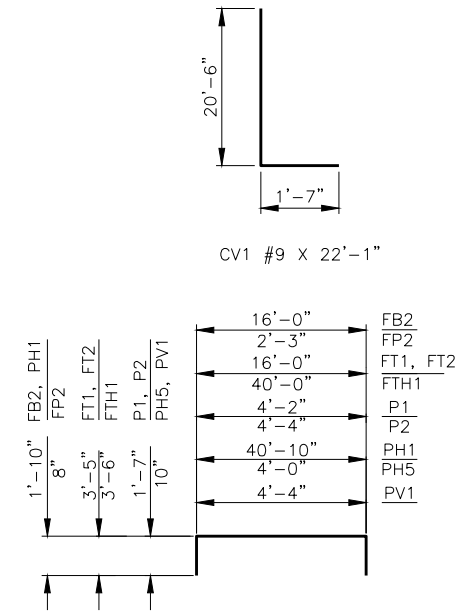
DETAIL OF WELDED SPLICE



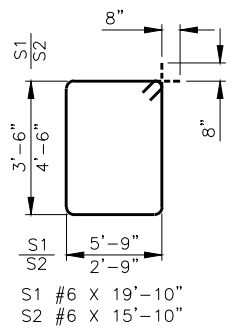
WATER REPELLENT TREATMENT DETAIL



SPIRAL REINFORCING SPLICE DETAIL

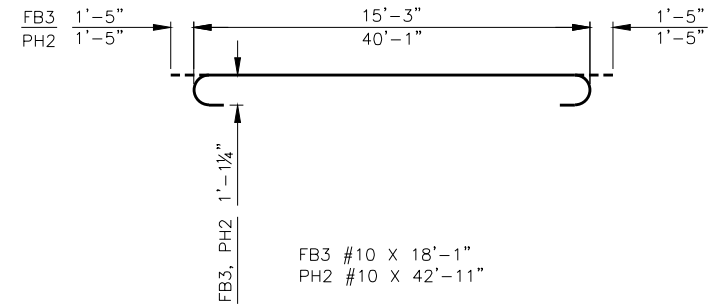


- FB2 #10 X 19'-8"
- FP2 #4 X 3'-7"
- FT1 #6 X 22'-10"
- FT2 #9 X 22'-10"
- FTH1 #6 X 47'-0"
- P1 #4 X 7'-4"
- P2 #4 X 7'-6"
- PH1 #10 X 44'-6"
- PH5 #5 X 5'-8"
- PV1 #5 X 6'-0"



PIER BAR LIST				
ONE SHOWN - TWO REQUIRED				
EPOXY COATED REINFORCING				
MARK	SIZE	NO.	FORM	LENGTH
CV1	#9	28	BNT.	22'-1"
FB1	#6	16	STR.	16'-0"
FB2	#10	40	BNT.	19'-8"
FB3	#10	40	BNT.	18'-1"
FB4	#6	20	STR.	1'-2"
FB5	#6	8	STR.	4'-4"
FB6	#6	6	STR.	10'-4"
FH1	#9	14	STR.	40'-0"
FH2	#6	16	STR.	2'-6"
FH3	#6	2	STR.	5'-0"
FH4	#6	2	STR.	7'-5"
FH5	#6	1	STR.	14'-5"
FP1	#4	12	STR.	15'-6"
FP2	#4	84	BNT.	3'-7"
FT1	#6	16	BNT.	22'-10"
FT2	#9	42	BNT.	22'-10"
FTH1	#6	19	BNT.	47'-0"
P1	#4	30	BNT.	7'-4"
P2	#4	30	BNT.	7'-6"
PH1	#10	9	BNT.	44'-6"
PH2	#10	4	BNT.	42'-11"
PH3	#5	6	STR.	40'-10"
PH4	#10	13	STR.	40'-10"
PH5	#5	8	BNT.	5'-8"
PV1	#5	6	BNT.	6'-0"
S1	#6	48	BNT.	19'-10"
S2	#6	110	BNT.	15'-10"
PLAIN REINFORCING				
MARK	SIZE	NO.	FORM	LENGTH
CS1	W26	2	BNT.	587'-7"

① LENGTH SHOWN DOES NOT ACCOUNT FOR SPLICES. CONTRACTOR MAY ADD SPLICES AS NECESSARY, BUT PAYMENT WILL NOT BE MADE FOR EXTRA LENGTH REQUIRED FOR SPLICES.



THIS DRAWING IS PRELIMINARY IN NATURE. IT IS NOT A FINAL SIGNED AND SEALED DRAWING

DESIGN	J.W.H.
DRAWN	Z.M.B. J.F.R.
CHECKED	J.W.H.
APPROV.	T.A.C.
SQUAD	CEC

SH34 OVER N. PERSIMMON CREEK WOODWARD COUNTY BRIDGE A

PIER STEEL PILING DETAIL AND BAR LIST